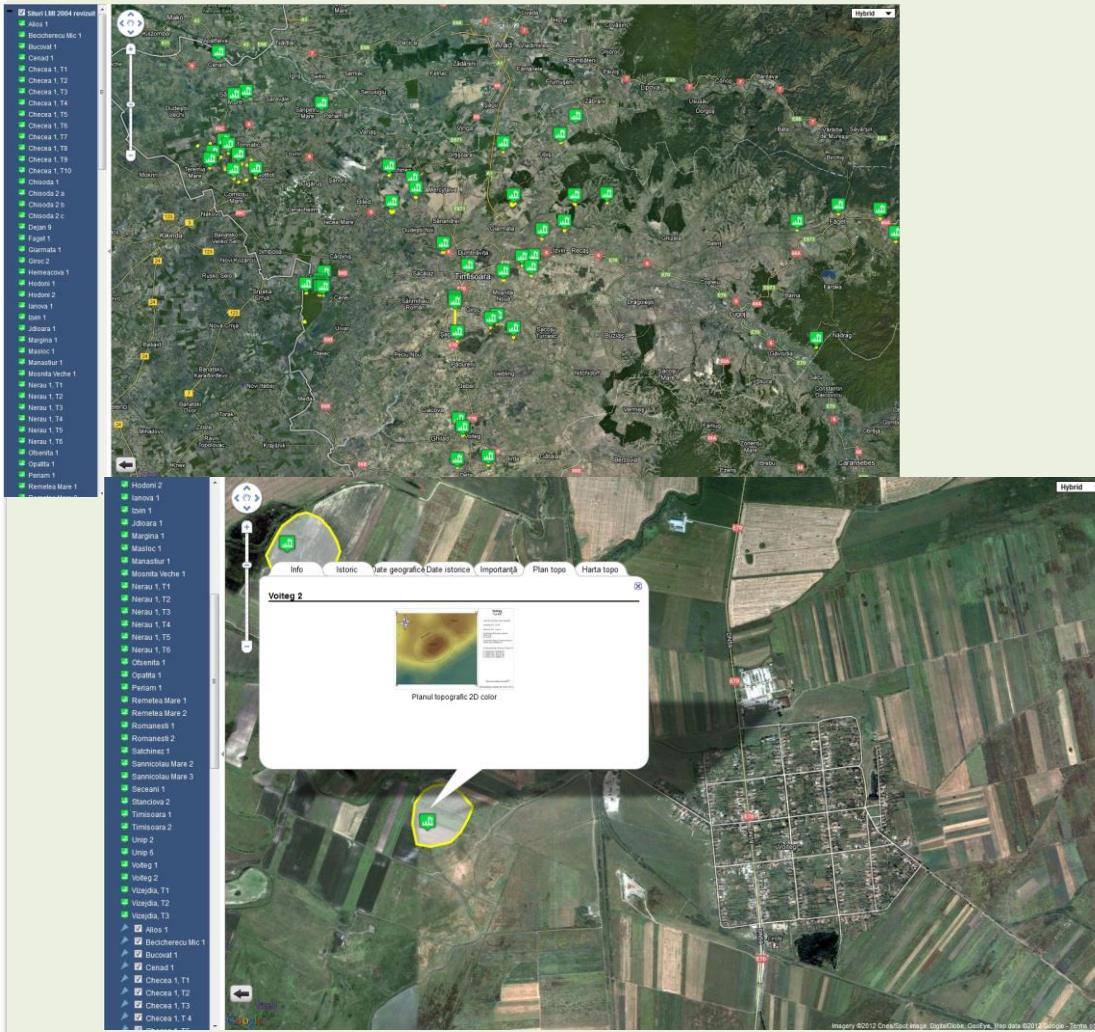


# ARHEO = Connections

## ArheoVest Association, Romania

- Developed a clear view of the situation in Romania regarding the digital registration of archaeological data
- Great connections in ARIADNE with people offering advice in good practice archaeological data management



# Impacts and recognition

- Impact

- Increased interest of public institutions in information access platforms, also in cooperation with the private sector
- Many historical research institutions now aim to develop standardised databases and share their information

- Also we

- Learned to apply the common dataset model and vocabularies
- Realised that we have so much archaeological information that should become available, locally as well as internationally

- *“One of the important achievements of the ArheoVest team was the creation of the **first spatial GIS database**, on the Google Earth platform, designed for managing the **archaeological sites from the Historical Monuments List**. Each site from this list benefited of a topographic survey and on field documentation, this being the first accomplishment from Romania”* – Dr. Dan Luceș, Head of Scientific Research, West University of Timișoara
- *“The work of the ArheoVest team has materialized in **standardization of archaeological site sheets**, their **model being taken at national level** by the RAN System (the National Archaeological Repertoire) \*– Arhg. Victor Bunoiu, expert adviser, Country Directorate for Culture Timis, Culture Minister*

